

# Yellowcard - Words hands heart

Tom: G

NOTE: the original tuning is Drop D, but if you're only playing the chords E A D G B e its fine.

EADGBE tuning:

Drop D tuning:

C D2 D  
The whole world was sleeping and i was there  
C D2 D  
you could just sense this feeling in the air

Em G  
like no one's words were good enough  
Bm C  
to define what we fear  
Em G  
and no one's words were strong enough  
Bm C  
to fix what happened here oh oh

G D E G G  
lead on to save me lead us all there  
Bb D Em G  
find me some answers one nation beware  
D Em G G  
can't tell the difference between myth and man  
Bb D Em G D  
or what's necessary or where i should stand

C D2 D  
The whole world is different now men have died  
C D2 D  
you could just sense this feeling in our eyes

Em G  
like no one's hands are big enough  
Bm C  
to hold on to this fear  
Em G  
and no one's hands are strong enough  
Bm C  
to fix what happened here

G D E G G  
lead on to save me lead us all there  
Bb D Em G  
find me some answers one nation beware  
D Em G G

can't tell the difference between myth and man  
Bb D Em G D  
or what's necessary or where i should stand

D Bm  
So do we dare now  
G  
raise our voices loud  
Bb D  
we're searching for something that cannot be found  
Bm  
i hear open mouths  
G  
and i see open hands  
Bb D - Bm - G - Bb  
- (repeat)  
but the blinded and silent i can't understand

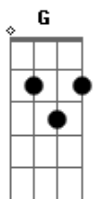
C D2 D  
the whole world is watching with one blank stare  
C D2 D  
i could just sense this feeling of ill repair

Em G  
like no one's heart is full enough  
Bm C  
to keep away this fear  
Em G  
and no one's heart is strong enough  
Bm C  
to fix what happened here

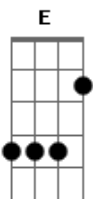
G D E G G  
lead on to save me lead us all there  
Bb D Em G  
find me some answers one nation beware  
D Em G G  
can't tell the difference between myth and man  
Bb D Em G D  
or what's necessary or where i should stand

D Bm  
So do we dare now  
G  
raise our voices loud  
Bb D  
we're searching for something that cannot be found  
Bm  
i hear open mouths  
G  
and i see open hands  
Bb C - Bm - D  
(let ring)  
but the blinded and silent i can't understand

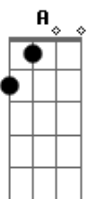
## Acordes



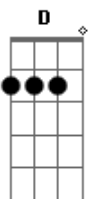
© ukulele-chords.com



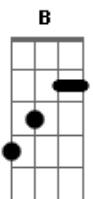
© ukulele-chords.com



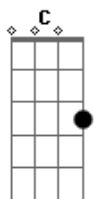
© ukulele-chords.com



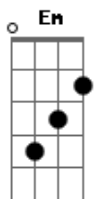
© ukulele-chords.com



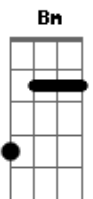
© ukulele-chords.com



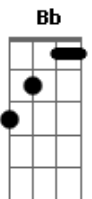
© ukulele-chords.com



© ukulele-chords.com



© ukulele-chords.com



© ukulele-chords.com