

Sum 41 - Pieces

tom:

Intro: Dm Bb F C

Dm Bb F
I tried to be perfect but nothing was worth it
C Bb Dm
I don't believe it makes me real
Bb F
I thought it'd be easy but no one believes me
C Bb
I meant all the things I said

F
If you believe it's in my soul
C Bb
I'd say all the words that I know
F
Just to see if it would show
C Bb
That I'm trying to let you know
That I'm better off on my own
(Dm Bb F C)

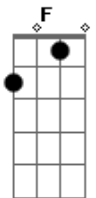
Dm Bb
This place is so empty
F
My thought are so tempting
C Dm
I don't know how it got so bad
Bb F
Sometimes it's so crazy that nothing can save me
C Bb
But it's the only thing that I have

F
If you believe it's in my soul
C Bb
I'd say all the words that I know
F
Just to see if it would show
C Bb
That I'm trying to let you know
That I'm better off on my own
(F Bb F Bb Dm C Bb)
(F Dm C Bb F A)

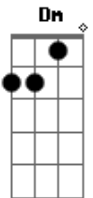
Dm Bb F
I tried to be perfect it just wasn't worth it
C Dm
Nothing could ever be so wrong
Bb
It's hard to believe me
F
It never gets easy
C Bb
I guess I knew that all long

F
If you believe it's in my soul
C Bb
I'd say all the words that I know
F
Just to see if it would show
C Bb
That I'm trying to let you know
F
That I'm better off on my own

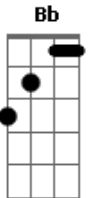
Acordes



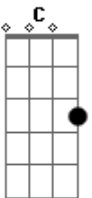
© ukulele-chords.com



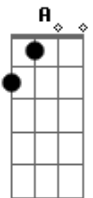
© ukulele-chords.com



© ukulele-chords.com



© ukulele-chords.com



© ukulele-chords.com