

Suede - Everything Will Flow

tom:

Dm

Album: Head Music (June 99)
Released as a single (August 99)

Written by: Bret Anderson
Transcribed by: Fast Eddie

Overview:

Okay, even though this song has a lot of strings in it, it is very possible to play on the guitar. The same 4 chords are used throughout, and as always, are a lot of different variations on this main riff:

```

/-----/
|

```

Okay, that's the basic lesson, here's the song in full.

Intro: Notes: This is just the riff played over and over. And, although it's not E-E tuning, I'll just use those chord names anyway. :D

Dm Dm C F Am

Dm C F Am

Verse:
Notes: Simple yet poetic. That makes this song so great! Same as the intro, but if you can't get the picking down, just strum, it sounds good like that too, but if you do strum, be sure to get the riff at the end of each line!

Dm C F Am

Dm C F Am

Dm C F Am

Dm C F Am

Chorus:
Notes: Nothing much, except that you should probably just strum this part. Or get an electric to play a chord at a time. :-)

Dm C F Am

Dm C F Am

End part/Middle 8:

Notes: It's just the same as the chorus. I won't bother to write it again.

Lyrics:
Notes: These are great! Actually read these! Try to figure out what they mean! These lyrics make the song so good!

Dm C Bb Bbm F F
Watch the early morning sun, drip like blood from the day
Dm C Bb Bbm F F
See the pretty people run, so many games to play
Dm C Bb Bbm F F
See the blue suburban dream, under the jet plane sky
Dm C Bb A
Sleep away and dream a dream, life is just a lullaba-by

Bb C F Dm
Oh ho, ho ho ho, and everything will flow
Bb C A Dm
Oh ho, ho ho ho, you know everything will flow
Bb A
Oh ho, ho

Dm C Bb Bbm F F
Watch the day begin again, whispering into the night
Dm C Bb Bbm F F
See the pretty people play, hurrying under the light
Dm C Bb Bbm F F
A million cars, a million trains, under the jet plane sky
Dm C Bb A
Nothing lost, and nothing gained, life is just a lullaba-by

Bb C F Dm
Oh ho, ho ho ho, and everything will flow
Bb C A Dm
Oh ho, ho ho ho, I said everything will flow
Bb C F Dm
Oh ho, ho ho ho, you know everything will flow
Bb A
Oh ho, ho

| Dm | C | Bb Bbm | F F | x3
| Dm | C | Bb Bbm | A |

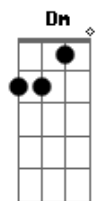
Bb C F Dm
Oh ho, ho ho ho, and everything will flow
Bb C A Dm
Oh ho, ho ho ho, you know everything will flow

Bb C F
Dm
The neon lights in the night tonight will say, everything will flow
Bb C A
Dm
The stars that shine in the open sky will say, everything will flow
Bb C F
Dm
The lovers kissed with an open lisp will say, everything will flow
Bb C A Dm
The cars parked in the hyper market know, everything will flow

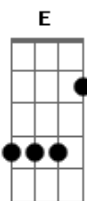
Bb C F Dm
Bb C A Dm
Bb C F Dm

Key:
B - Bend the string, the number of "B"s mean how many times to bend the string farther.
R - Release a bend to make a quick change.
H - Hammer onto a different fret on the same string.
P - Pull off a finger to make quick change.
>> - Scrape pick against the string going down (towards lowest fret)

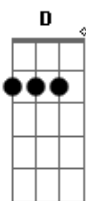
Acordes



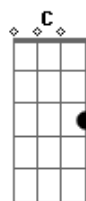
© ukulele-chords.com



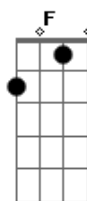
© ukulele-chords.com



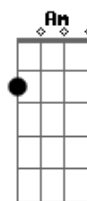
© ukulele-chords.com



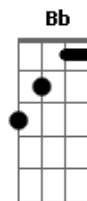
© ukulele-chords.com



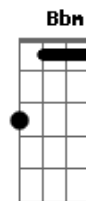
© ukulele-chords.com



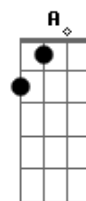
© ukulele-chords.com



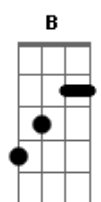
© ukulele-chords.com



© ukulele-chords.com



© ukulele-chords.com



© ukulele-chords.com