

Simon & Garfunkel - Flowers Never Bend With The Rainfall

Tom: A

(intro) A

(solo)

A Dbm7
Through the corridors of sleep
D A
Past the shadows dark and deep
Dbm7 D A D A
My mind dances and leaps in confusion.
A Dbm7
I dont know what is real,
D A
I can't touch what I feel
Dbm7 D A
And I hide behind the shield of my illusion.

E D A Gbm
So I'll continue to continue to pretend
Bm7 Gbm
My life will never end,
B D
And flowers never bend
A
With the rainfall.

(solo)

A Dbm7
The mirror on my wall
D A
Casts an image dark and small
Dbm7 D A
But Im not sure at all its my reflection.
A Dbm7
I am blinded by the light

D A
Of God and truth and right
Dbm7 D A
And I wander in the night without direction.

E D A Gbm
So I'll continue to continue to pretend
Bm7 Gbm
My life will never end,
B D
And flowers never bend
A
With the rainfall.

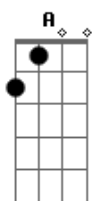
(solo)

A Dbm7
Its no matter if youre born
D A
To play the king or pawn
Dbm7 D A
For the line is thinly drawn tween joy and sorrow,
A Dbm7
So my fantasy
D A
Becomes reality
Dbm7 D A
And I must be what I must be and face tomorrow.

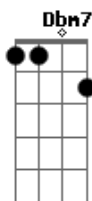
E D A Gbm
So I'll continue to continue to pretend
Bm7 Gbm
My life will never end,
B D
And flowers never bend
A
With the rainfall.

(Solo Final 3x)

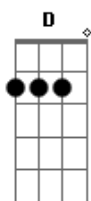
Acordes



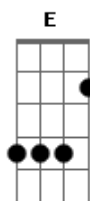
© ukulele-chords.com



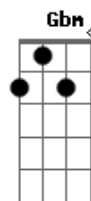
© ukulele-chords.com



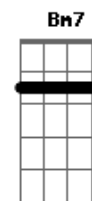
© ukulele-chords.com



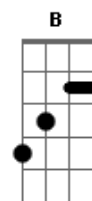
© ukulele-chords.com



© ukulele-chords.com



© ukulele-chords.com



© ukulele-chords.com