

# Siamés - No Lullaby

tom:

Intro: **Dm** **Am** **C** **Gm**  
**Dm** **C** **Am** **Gm**

[Primeira Parte]

**Dm**  
 Blinding lights  
**Am**  
 Thunder tremble pack  
**Gm** **F**  
 Muddy hearts beanie babies lies  
**Gm** **F** **D**  
 There's no lullaby in this nowhere land  
**Dm** **F**  
 Shining high rumbles in the dark  
**Am** **Gm**  
 Torn appart devil in disguise  
**F** **Gm** **D**  
 There's no lullaby in this nowhere land

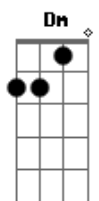
[Refrão]

**F** **G** **Dm**  
 What's the meaning when you have a broken home home home  
**Bb** **Gm** **Dm**  
 Where's the love when you were left on your own  
**C**  
 So alone  
 ( **Dm** **Am** **C** **Gm** )  
 ( **Dm** **C** **Am** **Gm** )

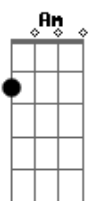
[Segunda Parte]

**Dm** **C**  
 Tumbling dice sentimental crap  
**Am** **Bb**  
 Whos the smart leading daily cries

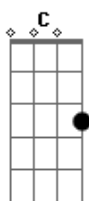
## Acordes



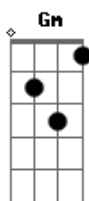
© ukulele-chords.com



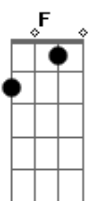
© ukulele-chords.com



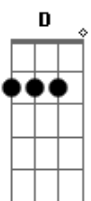
© ukulele-chords.com



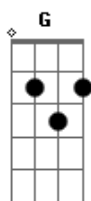
© ukulele-chords.com



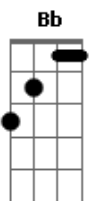
© ukulele-chords.com



© ukulele-chords.com



© ukulele-chords.com



© ukulele-chords.com

**F** **Gm** **D**  
 There's no lullaby in this nowhere land

[Refrão]

**F** **G** **Dm**  
 What's the meaning when you have a broken home home home  
**Bb** **Gm** **Dm** **C**  
 Where's the love when you were left on your own  
**F** **G** **Dm**  
 What's the meaning when you have a broken home home home  
**Bb** **Gm** **Dm**  
 Where's the love when you were left on your own  
**C**  
 So alone

[Solo] **Gm** **Bb** **Dm**  
**Gm** **Bb** **Dm**  
**Gm** **Bb** **Dm**  
**Gm** **Bb** **C**

[Refrão]

**F** **G** **Dm**  
 What's the meaning when you have a broken home home home  
**Bb** **Gm** **Dm**  
 Where's the love when you were left on your own  
**F** **G** **Dm**  
 What's the meaning when you have a broken home home home  
**Bb** **Gm** **Dm**  
 Where's the love when you were left on your own  
**C**  
 So alone

( **Dm** **Am** **C** )  
 ( **Gm** **Dm** **C** )

**Am** **Dm**  
 Who said you're on your own?