

She & Him - Don't Look Back

Tom: A

(intro) A A7M D Dm
F E

A Dbm
Orpheus melted the heart of Persephone,
D F E
but I never had yours
A Dbm
I followed you back to the end of the path,
D F E
but I never found the door

A Gbm D Dm
And you can work to save your love
A Gbm Bm E
You can bear it from the earth below
A Gbm D
You can work but you can't let go
Bm E
Oh, oh but you have to know

(refrão)
A Bm D E
Don't look back all you'll ever get
A Bm D E
is the dust from the steps before
A Bm D E
I don't have to see you every day,
A Bm D E
but I just want to know you're there
(A A7M D Dm)
(F E)

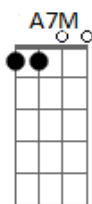
A Dbm
Quietly took to the dark of the day
D F E
and the hiss of the summer night
A Dbm
The heat of the breeze was a cell block wall
D F E

and when I looked you were out of sight
A Gbm D Dm
And you can work to save your love
A Gbm Bm E
You can bear it from the earth below
A Gbm D
You can work but you can't let go
Bm E
Oh, oh but you have to know

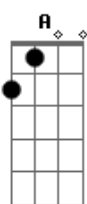
(refrão)
A Bm D E
Don't look back all you'll ever get
A Bm D E
is the dust from the steps before
A Bm D E
I don't have to see you every day,
A Bm D E
but I just want to know you're there
(A A7M D Dm)
(F E)
(A Dbm D F E)

A Gbm D Dm
And you can work to save your love
A Gbm Bm E
You can bear it from the earth below
A Gbm D
You can work but you can't let go
Bm E
Oh, oh but you have to know
(refrão)
A Bm D E
Don't look back all you'll ever get
A Bm D E
is the dust from the steps before
A Bm D E
I don't have to see you every day,
A Bm D E
but I just want to know you're there

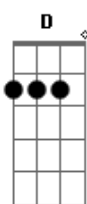
Acordes



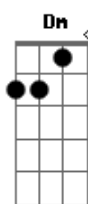
© ukulele-chords.com



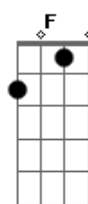
© ukulele-chords.com



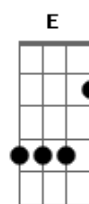
© ukulele-chords.com



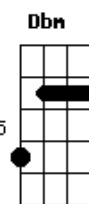
© ukulele-chords.com



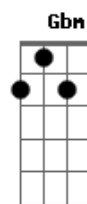
© ukulele-chords.com



© ukulele-chords.com



© ukulele-chords.com



© ukulele-chords.com



© ukulele-chords.com