

# Roxette - Paint

Tom: F  
Intro: Gm Eb Cm Bb Gm Eb Bb F

Gm  
I've got a hot chilly feeling I don't understand  
I've got to run through this minute like a hurricane  
I've got to tighten my wire from the sense to the soul  
I find my back to the wall when it's time to go  
I've got to know

Gm  
is that your heartbeat?

Cm F  
Paint me right  
Can you feel the heat in me tonight?  
Oh I, I'm the pearl  
Paint your love all over my world  
Intro: Abm Eb Cm Bb

Gm Eb  
I get a love shock/electric from the touch of your hand  
I'm getting lost in the riddles of the modern man  
I've got it up down all around tied to the bone  
Hey there's a strange situation on the late nite show  
I've got to know

Gm

is that your heartbeat?

Cm F  
Paint me right  
Can you feel the heat in me tonight?  
Oh I, I'm the pearl  
Paint your love all over my world  
Do it right, I can feel the woman in me tonight  
Oh I, I'm the pearl  
Paint your love all over my world

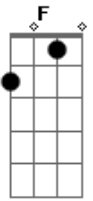
Gm

Passagem: C F C F

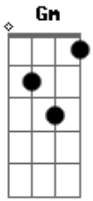
Fm Bb  
Paint me right  
Can you feel the heat in me tonight?  
Oh I, I can feel the heat in me  
Paint me right  
Can you feel the heat in me tonight?  
Oh I, I'm the pearl,  
Paint your love all over my world  
Do it right, I can feel the woman in me tonight  
Oh I, I'm the pearl  
Paint your love all over my world

(Fm Bb Eb Ab) (Repeat and fade)

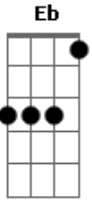
## Acordes



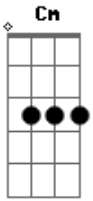
© ukulele-chords.com



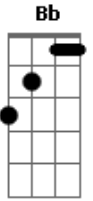
© ukulele-chords.com



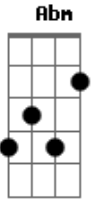
© ukulele-chords.com



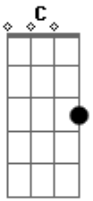
© ukulele-chords.com



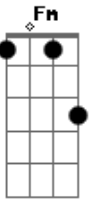
© ukulele-chords.com



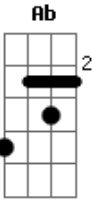
© ukulele-chords.com



© ukulele-chords.com



© ukulele-chords.com



© ukulele-chords.com