

Rômina e Daniel - A Rocha

Tom: E

(com acordes na forma de Capotraste na 2ª casa
Intro: D D D

D)

Edifiquei a minha casa
Em Jesus a minha rocha

Cai a chuva ela permanece em pé
Vem as enchentes ela permanece em pé
Sopram os ventos ela permanece em pé
É construída em Jesus

(volta ao início)

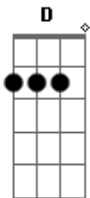
(Refrão 2x)

Jesus está
De braços abertos a nos proteger
Ele é a nossa rocha
se vier tribulação
não há o que temer

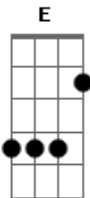
(final)

não há o que temer
não há o que temer

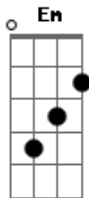
Acordes



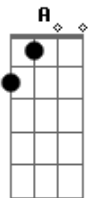
© ukulele-chords.com



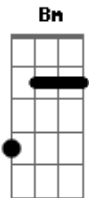
© ukulele-chords.com



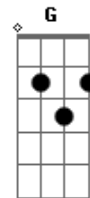
© ukulele-chords.com



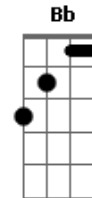
© ukulele-chords.com



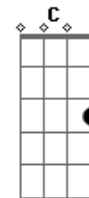
© ukulele-chords.com



© ukulele-chords.com



© ukulele-chords.com



© ukulele-chords.com