

Resgate - A resposta

Tom: C
Intro: -

verso - **Em** (E F Gb) G C G (G Gb F)
Em (E F Gb) G C G (Gb G Ab)
A (A Bb B) C B) (G Gb F E) volta
refrao - G D C D

Desde o principio a minha amizade

Comigo na mesa o mesmo pão
Mas pelas costa a traição
Se alimentando do que DEUS me deu
Roubando e usando o que não é seu
Pra alimentar o seu propri deus
Mas meu DEUS é a minha Rocha
E a resposta: eu continuo de pé
Andaram falando que eu tava falido
E anunciando que meu tempo acabou
Pensando que levam a minha porção
Tentaram comprar o que não tem preço
Mas se esqueceram do que eu já plantei
E da recompensa do DEUS que é fiel

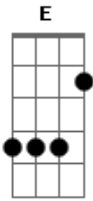
Acordes



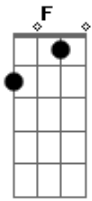
© ukulele-chords.com



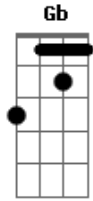
© ukulele-chords.com



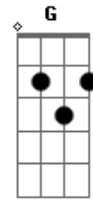
© ukulele-chords.com



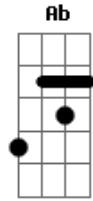
© ukulele-chords.com



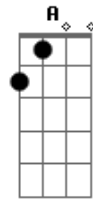
© ukulele-chords.com



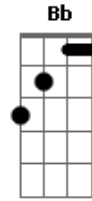
© ukulele-chords.com



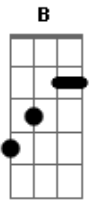
© ukulele-chords.com



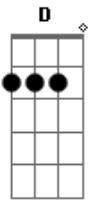
© ukulele-chords.com



© ukulele-chords.com



© ukulele-chords.com



© ukulele-chords.com