

Renato Inácio - Impulsivo

Tom: A

Não me importo em mudar
 Outra vez meu caminho
 Vou pra qualquer lugar mesmo que for sozinho
 Quer me acompanhar?
 Pro inferno estou indo

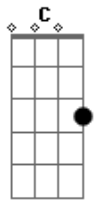
Encontrar meus heróis fracassados, perdidos

Com a alma atormentada passo por aqui
 A insônia, o silêncio, sinto mal estar
 Quem lê a minha mão não vê futuro, não
 Que acabe bem depressa esse carnaval
 São Paulo fede
 A loucura

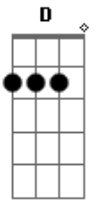
Acordes



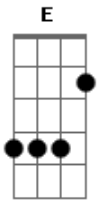
© ukulele-chords.com



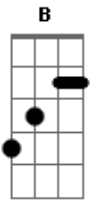
© ukulele-chords.com



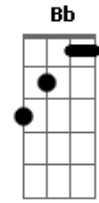
© ukulele-chords.com



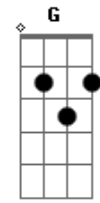
© ukulele-chords.com



© ukulele-chords.com



© ukulele-chords.com



© ukulele-chords.com