

# Pink - I Am Here

Tom: G  
Intro: F Bb C Dm  
F Bb C Dm

[Parte Primeira]

F Bb  
I open up my heart  
Bm  
You can love me or not  
C Dm  
There's no such thing as sin  
Dm  
Let it all come right in  
F Bb  
I wanna make some mistakes, I wanna sleep in the mud  
C Dm  
I wanna swim in the flood, I wanna fuck 'til I'm done  
F Bb  
I like whiskey on ice, I like sun in my eyes  
C Dm  
I wanna burn it all down, so let's start a fire  
F Bb  
I wanna be lost, so lost that I'm found  
C Dm  
Naked and laughing with my blood on the ground

[Refrão]

F Gm Dm  
I am here, I am here  
F  
I've already seen the bottom, so there's nothing to fear  
Gm Dm C  
I know that I'll be ready when the devil is near  
F Gm Dm  
I am here, I am here  
C F  
All of this wrong, but I'm still right here  
Gm Dm C  
I don't have the answers, but the question is clear

[Refrão]

C  
Let me ask you  
F  
Where does everybody go when they go?  
Gm Dm  
Where does everybody go when they go?  
Dm  
Where does everybody go when they go?  
C  
Let me ask you  
F  
Where does everybody go when they go?  
Gm Dm  
Where does everybody go when they go?  
Dm  
Where does everybody go when they go?  
C F  
Let me ask you

[Segunda Parte]

F Bb  
May the light be upon me  
C Dm  
May I feel in my bones that I am enough  
Dm  
I can make anywhere home  
F Bb  
My fingers are clenched, my stomach's in knots  
C Dm  
My heart it is racing, but afraid I am done  
F Bb  
Afraid I am done

F Gm Dm  
I am here, I am here

F  
I've already seen the bottom, so there's nothing to fear  
Gm Dm C  
I know that I'll be ready when the devil is near  
F Gm Dm  
Cause I am here, I am here  
F  
All of this wrong, but I'm still right here  
Gm Dm C  
I don't have the answers, but the question is clear

C  
Let me ask you  
F  
Where does everybody go when they go?  
Gm Dm  
Where does everybody go when they go?  
Dm  
Where does everybody go when they go?  
C  
Let me ask you  
F  
Where does everybody go when they go?  
Gm Dm  
Where does everybody go when they go?  
Dm  
Where does everybody go when they go?  
C  
Let me ask you

( F Gm Dm )  
( F Gm Dm )

[Ponte]

Bb C F Bb  
I can think of one thousand places  
C Bb A Bb  
Much worse than this

[Refrão]

F Gm Dm  
I am here, I am here  
F  
I've already seen the bottom, so there's nothing to fear  
Gm Dm C  
I know that I'll be ready when the devil is near  
F Gm Dm  
Cause I am here, I am here  
F  
All of this wrong, but I'm still right here  
Gm Dm C  
I don't have the answers, but the question is clear

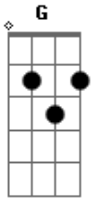
[Pré-Refrão]

C  
Let me ask you  
F  
Where does everybody go when they go?  
Gm Dm  
Where does everybody go when they go?  
Dm  
Where does everybody go when they go?  
C  
Let me ask you  
F  
Where does everybody go when they go?  
Gm Dm  
Where does everybody go when they go?  
Dm  
Where does everybody go when they go?  
C  
Let me ask you

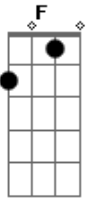
[Final]

F Gm Dm  
Let me ask you

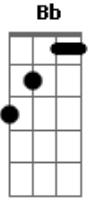
# Acordes



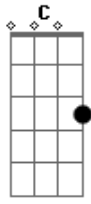
© ukulele-chords.com



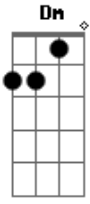
© ukulele-chords.com



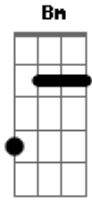
© ukulele-chords.com



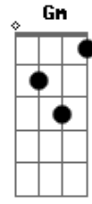
© ukulele-chords.com



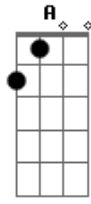
© ukulele-chords.com



© ukulele-chords.com



© ukulele-chords.com



© ukulele-chords.com