

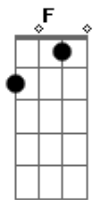
Pearl Jam - Trouble

Tom: F

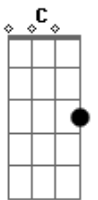
F C
 Trouble, oh trouble set me free
 Gm Bb Gm Bb
 I have seen your face and its too much for me today
 F C
 Trouble, oh trouble cant you see
 Gm Bb Gm Bb
 You're eating my heart away, and theirs nothing much left of
 me
 D G F C
 I've drunk your wine
 F C
 You have made your world mine
 F Gm
 so won't you be fair
 Bb
 oh won't you be fair
 D G F C

I don't want no more of you
 F C
 So won't you be kind to me
 Gm
 And let me go there
 Bb
 I have to go there
 Trouble, oh trouble move away
 I have seen your face and its too much for me today
 Trouble, oh trouble can't you see
 You have made me a wreck, now wont you leave me in my misery
 I've seen your eyes And I have seen deaths disguise, oh hanging
 on me
 oh hanging on me
 I'm deep and torn
 I'm shattered and lost and worn
 So shocking to see
 Too shocking to see
 Trouble, oh trouble please be kind
 I dont wanna fight, and I havn't got a lot of time...

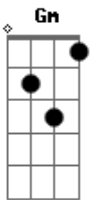
Acordes



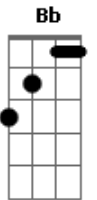
© ukulele-chords.com



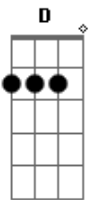
© ukulele-chords.com



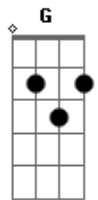
© ukulele-chords.com



© ukulele-chords.com



© ukulele-chords.com



© ukulele-chords.com