

Pato Fu - Aerosmiths

Tom: C

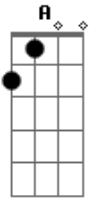
A A
Well I give up understanding
It's against my will
Time's pushing me away from the pop
'Cause I feel like a robber
And I look like a cop
Boogie woogie mother fucker
This here music can't stop

A Ab G Ab A
In my life I try and I try
It's time to make my mind E
Live or die A
What I'm asking you
At the end of my pray
God give me just to be friendly
Been trying to calculate my fate
Been trying to meet you -Solo: (Dm C Bb A

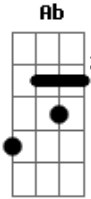
Acordes



© ukulele-chords.com



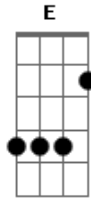
© ukulele-chords.com



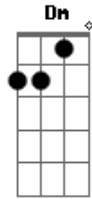
© ukulele-chords.com



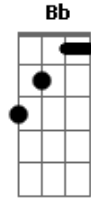
© ukulele-chords.com



© ukulele-chords.com



© ukulele-chords.com



© ukulele-chords.com