

# Pablo - Quero Ser

Tom: C

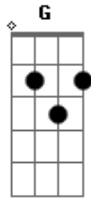
C  
 quero ser irresistivel ao teu altar  
F C Dm G  
 quero ser irresistivel senhor  
Bb C G Am  
 leva-me ao santo lugar

Dm G  
 onde eu possa te adorar  
Bb C G Am  
 leva-me senhor ao santo lugar  
C D E>>F>>G D Em  
 onde eu possa te adorar com todo meu louvor e adoracao  
C Am D Bm Am Am G C...  
 leva-me senhor

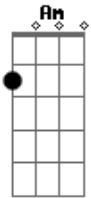
## Acordes



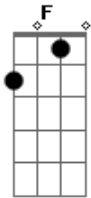
© ukulele-chords.com



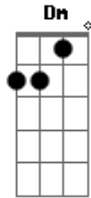
© ukulele-chords.com



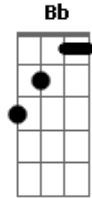
© ukulele-chords.com



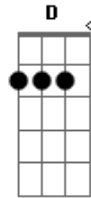
© ukulele-chords.com



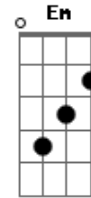
© ukulele-chords.com



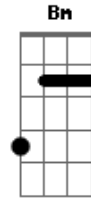
© ukulele-chords.com



© ukulele-chords.com



© ukulele-chords.com



© ukulele-chords.com