

Orla Gartland - Did It To Myself

tom:
Gm
[Primeira parte]
Gm
I woke up to an empty bed
Gm
I took a walk to clear my head
Gm
I wished you were there instead
C
But then I shook it off
Gm
What the hell did I used to do?
Gm
I'm even starting to speak like you
Gm
And now you're living in my memory, living in my mouth
C
Living in the four fucking walls of my house

[Pré-Refrão]

Eb Cm Gm
I feel like a let-down
To not be your friend now
Eb Cm Gm
I feel like a let-down
And now you're gone, gone, gone

[Refrão]

Gm
I know I did it to myself
I know I did it to myself
I know I did it to myself
I know I
Gm
I know I did it to myself
Am Bb
I know I did it to myself
C F
I know I did it to myself
C
I know I

[Segunda Parte]

Gm
Your personality split in two
Gm
I fell in love with the half of you
Gm
And when you told what you went through
C
I couldn't brush it off (Brush it off)
Brush it off, brush it off, brush it off)
Gm
I wonder, what are you doing now?
Gm
Defeats the point of shutting you out
Gm
And now my part of London feels so haunted
C
You gave me a power that I never even wanted

[Pré-Refrão]

Eb Cm Gm
You said, I feel like a let-down
To not be your friend now

Eb Cm Gm
I feel like a let-down
And now you're gone, gone, gone
[Refrão]

Gm
I know I did it to myself
Am Bb
I know I did it to myself
C F
I know I did it to myself
C
I know I
Dm Gm
I know I did it to myself
Am Bb
I know I did it to myself
C F
I know I did it to myself
C
I know I

[Ponte]

Gm Bb
Oh my god, you're everything I know
F C Dm
Let it sink in right now
Gm Am Bb
Oh my god, you're everything I know
C F C
Get ready for the comedown

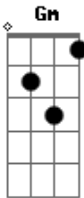
[Interlúdio]

Gm
Did it to myself
Bb
Did it to myself
F
Did it to myself
C
I know I
Gm Am
Did it to myself
Bb C
Did it to myself
F
Did it to myself
C
I know I

[Refrão]

Gm
I know I did it to myself
Am Bb
I know I did it to myself
C F
I know I did it to myself
C
I know, I know, I know, I know
Dm Gm
I know I did it to myself
Am Bb
I can't blame nobody else
C F
I know I did it to myself
C
I know I
Gm
You said answer honestly
F Gm
And I went with option B
F Gm
I lost you and you lost me
C
I can't shake it off

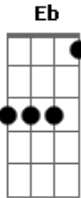
Acordes



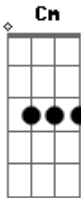
© ukulele-chords.com



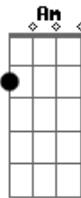
© ukulele-chords.com



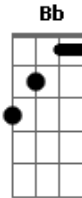
© ukulele-chords.com



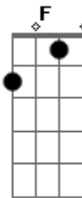
© ukulele-chords.com



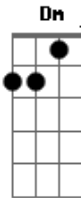
© ukulele-chords.com



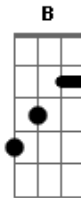
© ukulele-chords.com



© ukulele-chords.com



© ukulele-chords.com



© ukulele-chords.com