

# The Offspring - I'll Be Waiting

Tom: C

Standard Tuning (E A D G B E)

Lead Intro (Mild Distortion)

KEY:

- / -- Slide
- h -- Hammer On
- p -- Pull Off
- ~ -- Vibrato
- ) -- Bend

Verse

G D F(hi) C

..Once I had a friend that I could count on times of need  
are not enou

During the spoken word, strum A -> |---| and finish it with Bb -> |---|

Chorus

A Bb F(hi) C D

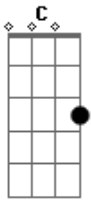
Halfway through chorus, play this little fill.

Then this at the end of the chorus

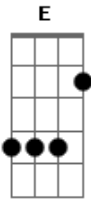
The Bassline Bridge is something like.

And for the solo, improvise something on this scale and it should sound ok.

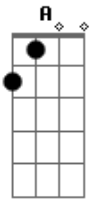
## Acordes



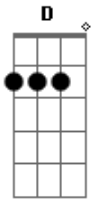
© ukulele-chords.com



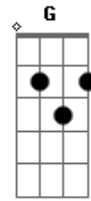
© ukulele-chords.com



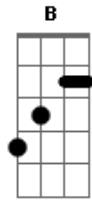
© ukulele-chords.com



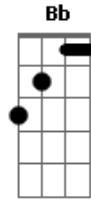
© ukulele-chords.com



© ukulele-chords.com



© ukulele-chords.com



© ukulele-chords.com