

# Nirvana - Radio Friendly Unit Shifter

Tom: **A**

0

## THE GUITAR PART

During verses: (**A**)

e 0--5-- --0--  
 B 0--5-- --2--  
 G 0--6-- Or --2--  
 D 0--7-- --2--  
 A 0--7-- --0--  
 E 0--5-- --0--

"Use Just Once And Destroy  
 Invasion Of Our Piracy  
 Afterbird Of **A** Nation  
 Starve Without Your Skeleton Key"

During chorus:

1 2 3 4 1 2 3 4  
**A A C B G B B B Gb Gb** --let the last 1/8 ring on

"What is Wrong with me.."

I guess this might be called the bridge:

**C C C C C C C C e e e e e e e e A A A A A A A G G G G G**  
**G G G**

"Hate, Hate your enemies.."

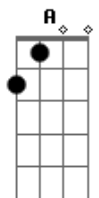
The Rhythms may be different, but it's the right chords.

## THE BASS PART

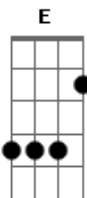
Bass\_most: (during the whole song except bridge)

Bass\_bridge: (simplified, play some other notes to spice up)

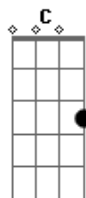
## Acordes



© ukulele-chords.com



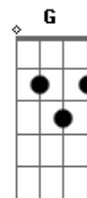
© ukulele-chords.com



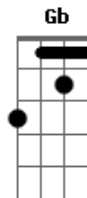
© ukulele-chords.com



© ukulele-chords.com



© ukulele-chords.com



© ukulele-chords.com