

# Joni Mitchell - Little Green

Tom: E

He went to California

(com acordes na forma de Capostraste na 4ª casa C)

Hearing that everything's warmer there so you

From:

Write him a letter and say 'her heyes are blue', he sends you a poem and she's lost to you

=====

>From album Blue  
 Written in 1968 (although Blue was released in 1972 I believe)  
 Transcribed by: Tino Meinen  
 Tuning (low to high) D G D G B D  
 Capo 4th Fret

Little green He's a non-conformer. Just a Little  
 Green like the color when the spring is born There'll be

Chord shapes:

G Bm Am G2sus4 G G7sus2 C  
 Bb  
 DGDGBD DGDGBD DGDGBD DGDGBD DGDGBD DGDGBD  
 DGDGBD DGDGBD  
 x00434 x44030 x22010 x00210 000000 x00203  
 x55555 x33333

Crocuses to bring to school tomorrow Just a Little

C Bb G G G

Green like the nights when the northern lights perform. There'll be

(The low bass D string is only played at the very end of the song, in the last chord which gives a very nice effect of relaxation!!)

icicles and birthday clothes, and sometimes there'll be sorrow

I've indicated the fingering of the right hand for the intro. During the rest of the song the thumb (p) always plays the 4th and 5th, and the three fingers(i,m,a) play 1st, 2nd, and 3rd string. The time signature is 8/8 most of the time, but sometimes changes to 4/4 for one measure (e.g. bar no 2 in the intro) ('H' means Hammer on)

Child with a child pretending

Weary of lies you're sending home so you

Intro: G Bm Am G2sus4

G  
 a m a a a i a m a m a m m i a i  
 a i  
 m i m m m m p i p i i p i p i p p  
 p p p i p i p p p p p p p p

sign all the papers in the family name, you're sad and you're sorry but you're not ashamed, Little

G Bm Am G2sus4 G

Green have a happy ending Just a Little

Born with the moon in cancer

Green like the color when the spring is born There'll be

G Bm Am G2sus4 G7sus2

Call her Choose her a name she will answer to

Crocuses to bring to school tomorrow Just a Little

Am G C

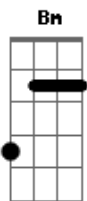
Green, and the winters cannot fade her, call her Green for the children who've made her Little

Green like the nights when the northern lights perform. There'll be

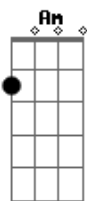
Green, be a gypsy dancer.

icicles and birthday clothes, and sometimes there'll be sorrow

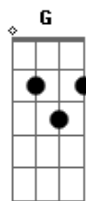
## Acordes



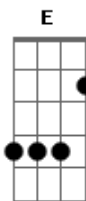
© ukulele-chords.com



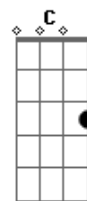
© ukulele-chords.com



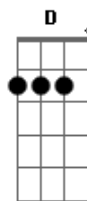
© ukulele-chords.com



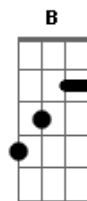
© ukulele-chords.com



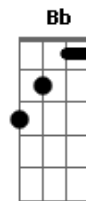
© ukulele-chords.com



© ukulele-chords.com



© ukulele-chords.com



© ukulele-chords.com