

Millencolin - Lights Out

Tom: **C**
Intro: GUITAR1: C, _____ (Repeat during the whole intro:)

GUITAR2: (Comes in after a while:)

C, D#, **Ab** - **Bb** - G, **C** (x2)

VERSE:
C, D#, A#, **Ab** (x4)

CHORUS:
F, G#, **C**
F, G#, C, **Bb**
F, G#, **C**

G#, **Bb** (x2)

RIFF1: (Only arr. for guitar2:)
C, G#, **Bb** (x2)

VERSE:

CHORUS: (The last line is only to be played one time:)

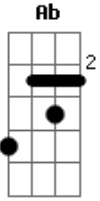
BRIDGE:
C, G#, C, **Bb**
G#, F, C, G#, F, **Bb**

CHORUS: (Repeat the last line a couple of times:)
(End up with "C")

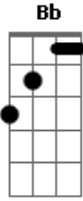
Acordes



© ukulele-chords.com



© ukulele-chords.com



© ukulele-chords.com