

Matt Maher - Lord I Need You

Tom: **Bb**

(com acordes na forma de
Capotraste na 3ª casa **G**)
Intro: **G** **C2** **G** **C2**

G **C2** **G**
Lord I come I confess
D **Em7** **D** **C**
Bowling here I find my rest
G **C2** **G**
Without You I fall apart
G **D** **C** **C**
You're the one that guides my heart

G **C2** **G** **D**
Lord I need You oh I need You
Em7 **C2** **G** **D**
Every hour I need You
G **G** **G** **C2**
My one defense my righteousness
G **D** **G** **C2**
Oh God how I need You

G **C2** **G**
Where sin runs deep Your grace is more
Em7 **D** **C**
Where grace is found is where You are
G **C2** **G**
And where You are Lord I am free
D **D** **G** **C2**

Holiness is Christ in me

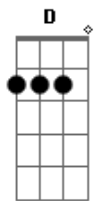
G **C2** **G** **D**
Lord I need You oh I need You
Em7 **C2** **G** **D**
Every hour I need You
G **G** **G** **C2**
My one defense my righteousness
G **D** **G**
Oh God how I need You

G **G** **D** **Em7**
So teach my song to rise to You
D **C**
When temptation comes my way
G **G** **D** **Em7**
And when I cannot stand I'll fall on You
D **G** **C2**
Jesus You're my hope and stay

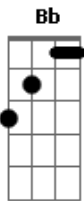
Repeat chorus2

G **G** **G** **C2**
You are my one defense my righteousness
G **D** **G**
Oh God how I need You
G **G** **G** **C2**
My one defense my righteousness
G **D** **G**
Oh God how I need You

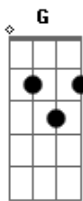
Acordes



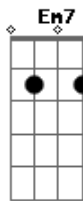
© ukulele-chords.com



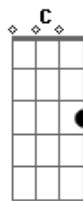
© ukulele-chords.com



© ukulele-chords.com



© ukulele-chords.com



© ukulele-chords.com