

# Marina Lima - Cara

Tom: C

A D A  
Jamais foi tão escuro  
D G  
No país do futuro  
Bm E7  
E da televisão  
A D A  
E nessa labirinto  
D G  
O que eu sinto, eu sinto  
Bm E7  
E chamam de paixão

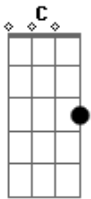
C Bb  
E me apaixonam questões ardentes  
F Fm C  
Que nem consigo assim de repente expor  
Bb  
Mas entre elas há coisas raras  
F Fm C

Que são belezas, loucuras, taras de amor

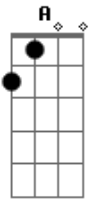
A D A  
Há sonhos e insônias  
D G  
Ozônios e Amazônias  
Bm E7  
E um novo amor no ar  
A D A  
Entre bilhões de humanos  
D G  
E siderais enganos  
Bm E7  
Eu quero é te abraçar

C Bb  
Mil novecentos e não sei quanto  
F Fm C  
É fim de século e no entanto é meu  
Bb  
Meu cada gesto e cada segundo  
F Fm C  
Em que te amar é um claro assunto no breu

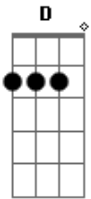
## Acordes



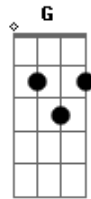
© ukulele-chords.com



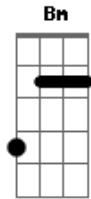
© ukulele-chords.com



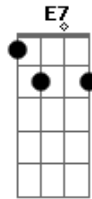
© ukulele-chords.com



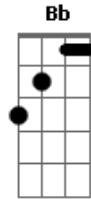
© ukulele-chords.com



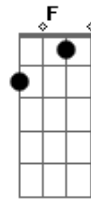
© ukulele-chords.com



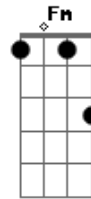
© ukulele-chords.com



© ukulele-chords.com



© ukulele-chords.com



© ukulele-chords.com