

Mad Caddies - Road Rash

Tom: E

Tabbed by theoneandonlyGEZ

Guitar I : Ska Guitar (Clean)

Guitar II: Distorted Guitar

Intro: Guitar I:

F A F Bb F C F F F F

Repeat with Pick Scrapes instead of pause in between when Horn on: comes in

Verse:

Guitar II:

C Bb

Guitar II:

F

Pre-Chorus:

Guitar I:

Dm A Dm G

Chorus:

Guitar II:

F C D Bb C Bb A

Post-Chorus:

Guitar II:

Repeat

Verse

Pre-Chorus

Chorus

After Chorus:

Guitar II:

End

Repeat

End on 2nd Time:

Outro:

Guitar I:

Dm A Dm A

F C Bb

Guitar II:

A C

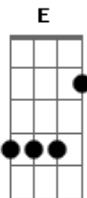
"Let's go!"

Guitar I

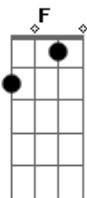
D F A Dm C Bb B C Db

G F

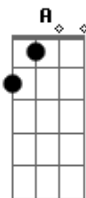
Acordes



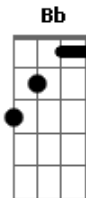
© ukulele-chords.com



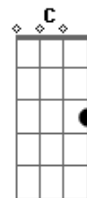
© ukulele-chords.com



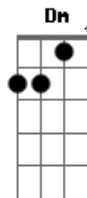
© ukulele-chords.com



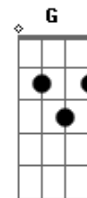
© ukulele-chords.com



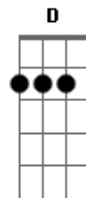
© ukulele-chords.com



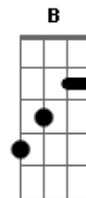
© ukulele-chords.com



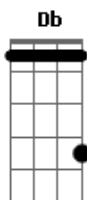
© ukulele-chords.com



© ukulele-chords.com



© ukulele-chords.com



© ukulele-chords.com