

Leon Bridges - Pull Away

Tom: F

Intro 2x: (F Dm)

(Verso 1)

Whoa, girl
I wanna (pull away) from you

It's been too long

I wanna (walk away) right now
I thought that our love was true
But all along, I was wrong

(Refrão)

My pillow bears a tear of a man in pain
Our love, I thought I could sustain
Don't worry about me anymore
Cause I'll be gone by the morning time

(F Dm) x2

(Verso 2)

Whoa, girl

I (poured out my heart) to you
Despite
You put a (knife in my back), straight through
I thought that our love was true
But all along, I was wrong

(Refrão)

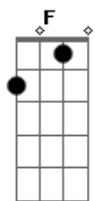
My pillow bears a tear of a man in pain
Our love, I thought I could sustain
Don't worry about me anymore
Cause I'll be gone by the morning time

Outro: F Dm F

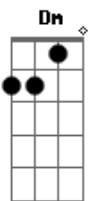
I was wrong
I was wrong
I was wrong

I was wrong
I was wrong

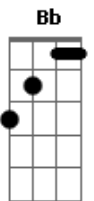
Acordes



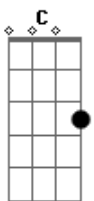
© ukulele-chords.com



© ukulele-chords.com



© ukulele-chords.com



© ukulele-chords.com