

# K-ON! - Gohan Wa Okazu

tom:  
Gb  
[Primeira Parte]

Gb Gb E A  
Gohan wa sugoi yo nande mo au yo hoka hoka  
Gb Gb E A  
Raamen udon ni okonomiyaki kore kore  
G Gb  
Tansuikabutsu to tansuikabutsu no  
E Gb  
Yume no koraboreeshon

(Atsu atsu hoka hoka)

[Refrão]

B D  
Gohan wa sugoi yo nai to komaru yo  
F G E  
Mushiro gohan wa okazu da yo  
B D  
Kansaijin nara yappari  
F C  
Okonomiyaki & gohan  
D D D D  
Demo watashi kansaijin ja naindesu

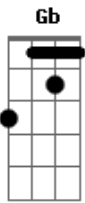
(Donai yanen!)

E Gb E D  
Ichi?ni?san?shi?go?ha?n!  
E Gb E D  
Ichi?ni?san?shi?go?ha?n!  
E Gb E D  
Ichi?ni?san?shi?go?ha?n!  
E Gb E D  
Ichi?ni?san?shi?go?ha?n!

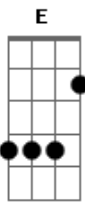
[Refrão 2]

B D

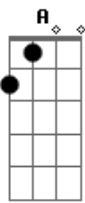
## Acordes



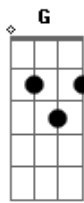
© ukulele-chords.com



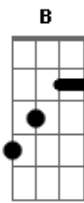
© ukulele-chords.com



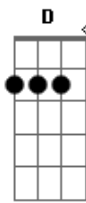
© ukulele-chords.com



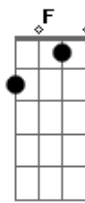
© ukulele-chords.com



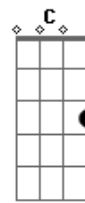
© ukulele-chords.com



© ukulele-chords.com



© ukulele-chords.com



© ukulele-chords.com

Gohan wa sugoi yo nai to komaru yo  
F G E  
Mushiro gohan wa okazu da yo  
B D  
Kansaijin nara yappari  
F C  
Okonomiyaki & gohan  
D D D D  
Demo watashi zense wa kansaijin

(Donai yanen!)

E Gb E D  
Ichi?ni?san?shi?go?ha?n!  
E Gb E D  
Ichi?ni?san?shi?go?ha?n!  
E Gb E D  
Ichi?ni?san?shi?go?ha?n!  
E Gb E D  
Ichi?ni?san?shi?go?ha?n!

M? i-kai

D D  
London Bridge River Thames  
D D  
London Tower & London Eye  
D Gb  
London London yappari  
F C  
Okonomiyaki & gohan  
D D D Gb  
Watashi wa genzai Londonjin

(Donai yanen)

E Gb E D  
Ichi?ni?san?shi?go?ha?n!  
E Gb E D  
Ichi?ni?san?shi?go?ha?n!  
E Gb E D  
Ichi?ni?san?shi?go?ha?n!  
E Gb E D  
Ichi?ni?san?shi?go?ha?n!