

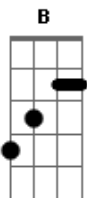
Hillsong United - Everyday

Tom: B
Intro: (E B Abm Gb)

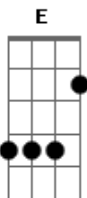
E B Abm
What you say Lord it's?
G B Abm
You who gave me life and I can't explain just
G B
How much you mean to me now
E B Abm
That you have saved me Lord,
G B
I give all that I am to you that
E B Abm Gb)bis
Everyday I can be a light that shines your name
E B Abm Gb
Everyday Lord I'll learn to stand upon your world
E

And I pray that I might come to know you more
G B Abm
That you would guide me in every single step I take that
E B Abm G B
Everyday I can be your light unto the world.
E Abm Gb
Everyday it's you I live for
B E Abm Gb
Everyday I'll follow after you
B E Abm Gb B E Abm Gb
Everyday I'll walk with you, my lord
(
B E Abm Gb
It's you I live for, everyday
B E Abm Gb
E It's you I live for, everyday
B E Abm Gb
It's you I live for, everyday

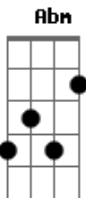
Acordes



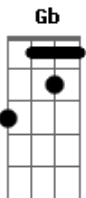
ukulele-chords.com



ukulele-chords.com



ukulele-chords.com



ukulele-chords.com