

# Hanson - Your Illusion

Tom: F

I. Hanson / T. Hanson / Z. Hanson

[Intro:] F C F C

F  
You say you want to kill yourself  
That would make it just a little bit easier C  
F  
You think you're the only one who hurts  
Try looking just a little bit harder C  
F  
I don't know why you're holding on  
To the damage that's been done C Bb C Bb

F Gm Am Bb  
Cause you've got me wrapped up in your illusion  
C Dm Em F G  
I keep on trying to change your conclusion  
F Gm Am Bb  
But you've got me wrapped up in your illusion  
C Dm Em F G F

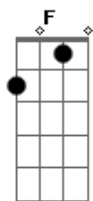
I keep on dying cause you're busy wasting life

Don't disguise your emptiness  
By placing blame on me and everyone else  
Rejected by your safety net  
But you can put the heart of your fears at rest  
When all I feel is deep regret  
Would you have me come

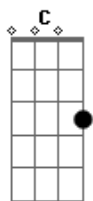
F Gm Am Bb  
Cause you've got me wrapped up in your illusion  
C Dm Em F G  
I keep on trying to change your conclusion  
F Gm Am Bb  
But you've got me wrapped up in your illusion  
C Dm Em F G  
I keep on dying cause you're busy wasting life  
C Dm Em F Ab Bb F  
I keep on dying cause you're busy wasting life  
You're busy wasting life

I can not go on this way  
I bring no consolation for you and your pain  
No one else can change your fate  
You'll have to do it for yourself

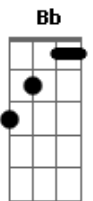
## Acordes



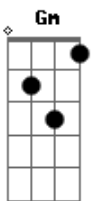
© ukulele-chords.com



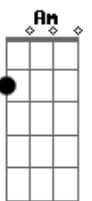
© ukulele-chords.com



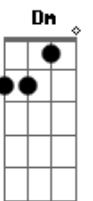
© ukulele-chords.com



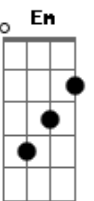
© ukulele-chords.com



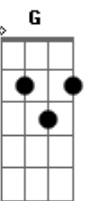
© ukulele-chords.com



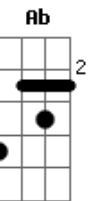
© ukulele-chords.com



© ukulele-chords.com



© ukulele-chords.com



© ukulele-chords.com