

# Green Day - Mechanical Man

Tom: **Db**  
Intro: **Ab Bb Gb Ab**

( **Ab Bb Ab Db** )  
I aint politician,I?m just a bad musician  
whatcha gonna do for me?  
Do you have the taste for sex and blood and hate or really  
good Isd?

( **Ab Bb Gb Db** )  
I?d like to start a band with you  
I?ll sing and you can learn to play the tambourine  
here?s an invitation, no time for hesitation  
come and join my family

PRÉ REFRAÃO:

( **Bb Ab** )  
I live inside of you  
but you don?t belong to me  
I?m a reflection of you  
( **Gb Ab** )  
What?s my recipe?

REFRAÃO:

( **Ab Bb Gb Ab** )  
A half a cup satanical, a teaspoon puritanical,

stirred with a bloody hand  
( **Ab Bb B A G** )  
A quarter cup messiahcal, a sprinkle of maniacal  
and now I?m a mechanical man  
Intro: ( **Ab Bb Ab Db** )  
I?ll give you the heads up  
come o and get your legs up  
This is called 'the family jam?  
Together we?ll stay hidden away for Armageddon  
and stick it to the man

PRÉ REFRAÃO:

REFRAÃO:

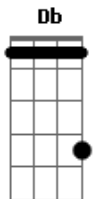
Charlie:[risos] ?watch this shit, woman! Gonna learn somethin?  
right now?

( **Ab Bb Ab Db** )  
open up the curtains,then we?ll start a hurtin?  
Come on let´s do the creppy-crawl  
The show´s about to go down  
come on, I got the low-down  
together we?ll make holywood fall

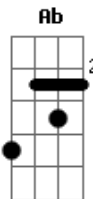
PRÉ REFRAÃO (2X)

REFRAÃO (2X)

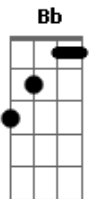
## Acordes



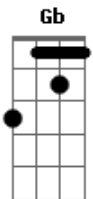
© ukulele-chords.com



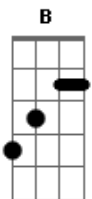
© ukulele-chords.com



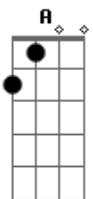
© ukulele-chords.com



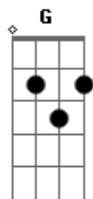
© ukulele-chords.com



© ukulele-chords.com



© ukulele-chords.com



© ukulele-chords.com