

Daniela Araújo - Santificação

Tom: C
Intro: 2x: D G A G

D G A G
Não quero me enganar, pensar que estás perto quando longe estou.

D G A G
Não quero me iludir Senhor, de mim mesmo, venha me salvar!

Bm A Am G
Eu saio agora do controle para que possas comandar

Bm A Bb C Gm Am
Aceita-me meu Senhor, vem me transformar.

D G A G
Lara, rala, Lara, Lara, lalaaa... 2x

D G A G
Tanto pra pensar e não pensar, tanto que perdi tentando me acertar.

D G A G
Preciso obedecer, nem sempre compreender qual é o Teu querer.

Bm A Am G
Pedir o que, dizer o que, fazer o que escolher.

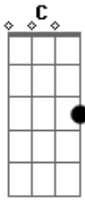
Bm A Bb C Gm Am
Deixar o Teu Amor me consolar, e descansar!

D G A G
Lara, rala, Lara, Lara, lalaaa... (2x)

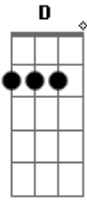
F G A G
Lara, rala, Lara, Lara, lalaaa... (3x)

F G A
Lara, rala, Lara, Laaaa...

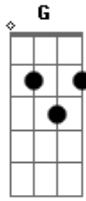
Acordes



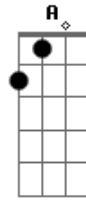
© ukulele-chords.com



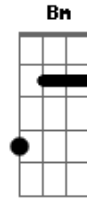
© ukulele-chords.com



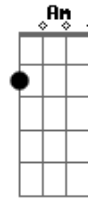
© ukulele-chords.com



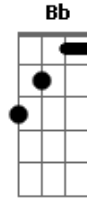
© ukulele-chords.com



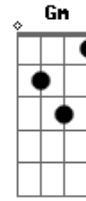
© ukulele-chords.com



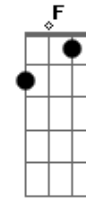
© ukulele-chords.com



© ukulele-chords.com



© ukulele-chords.com



© ukulele-chords.com