

Comunidade Católica Sal da Terra - Tende Piedade

Tom: E
Intro: E A B A

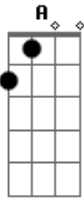
E B Dbm7 Abm7
Senhor que vindes visitar vosso povo na paz
Gbm7 E A Gb Gbm A B
E B
Tende piedade, Senhor tende piedade, tende piedade de nós
E B Dbm7 Abm7
Cristo que vindes salvar, o que estava perdido

Gbm7 E A Gb Gbm A B E B
Tende piedade, Cristo piedade, tende piedade de nós
E B Dbm7 Abm7
Senhor que vindes criar um mundo novo
Gbm7 E A Gb Gbm A B
E B
Tende piedade, Senhor tende piedade, tende piedade de nós
Gbm7 B A E
Tende piedade de nós

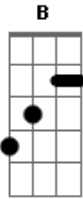
Acordes



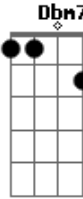
© ukulele-chords.com



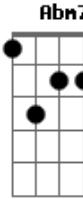
© ukulele-chords.com



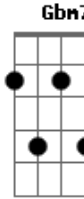
© ukulele-chords.com



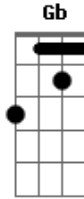
© ukulele-chords.com



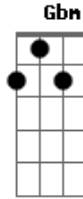
© ukulele-chords.com



© ukulele-chords.com



© ukulele-chords.com



© ukulele-chords.com