

Comunidade Católica Deus Conosco - És Meu Paraíso

tom:

Intro: E Dbm A7M B

Senhor meu Deus

Aonde eu irei se não me apontar

O caminho pelo qual

hei de seguir

Caminhei sem direção

Até que um dia encontrei

Uma luz na escuridão

A E Dbm B

Uhhh Uhhh Uhhh Uhhh

Meu amado és meu paraíso

A luz que eu preciso

Eu necessito crer

Meu amado, me leva ao paraíso

És tudo que eu preciso

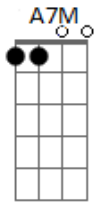
Eu quero teu querer

[Solo] Dbm B A Abm
Ab Dbm B A B

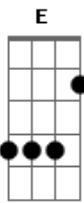
A E Dbm B

Jesus

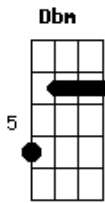
Acordes



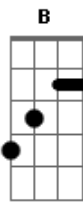
© ukulele-chords.com



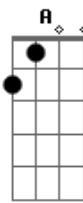
© ukulele-chords.com



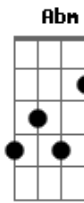
© ukulele-chords.com



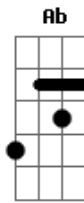
© ukulele-chords.com



© ukulele-chords.com



© ukulele-chords.com



© ukulele-chords.com