

Bush - Glycerine Acoustic

tom:

Intro: F C D Bb

F C D Bb
 Must be your skin, i'm sinkin' in must be for real
 Cause now i can feel i didn't mind it's not my kind
 It's not my time to wonder why
 Everything's gone white, everything's gray now you're here
 Now you're away don't want this, remember that
 I'll never forget, where you're at

C D Bb
 Don't let the days go by
 F C D
 Could've been easier on you
 Bb F
 I couldn't change, though i wanted to
 C D
 Should've been easier by three
 Bb F C Bb
 Our old friend fear, and you and me
 F C Bb F
 Glycerine

C D
 I'm never alone i'm alone all the time
 Bb F C
 Are you at one, do you lie we live on a wheel
 D Bb
 Where everyone steals and when we rise
 F C
 It's like strawberry fields treated you bad
 D Bb
 You bruise my face couldn't love you more
 F
 You've got a beautiful taste

C D Bb
 Don't let the days go by
 F C D

Could've been easier on you
 Bb F
 I couldn't change, though i wanted to
 C D
 Should've been easier by three
 Bb F C Bb
 Our old friend fear, and you and me
 F C Bb F
 Glycerine glycerine
 C D Bb F
 Don't let the days go by glycerine
 C D Bb F C D Bb F C
 Don't let the days go by i iii ii i i i i i
 D Bb F C
 Glycerine oh glycerine
 D Bb
 Glycerine oh glycerine

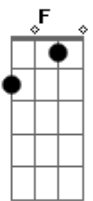
D Bb D Bb
 Bad moon white again, bad moon white again
 D Bb Bb
 Bad moon white again as she falls around me
 As she falls around me as she falls, as she falls
 As she falls i...
 F C D
 Needed you more, you wanted us less
 Bb F
 Could not kiss, just regress

It might just be, clear simple and pain
 Well that's just fine, that's just one of my names
 C D Bb
 Don't let the days go by
 F C D Bb
 Could've been easier on you, you, you
 F C
 Glycerine
 Bb F C Bb
 Glycerine
 F C
 Glycerine
 Bb F C Bb
 Glycerine
 F Bb F
 Oh... my glycerine

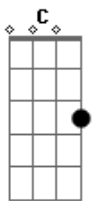
Acordes



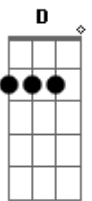
© ukulele-chords.com



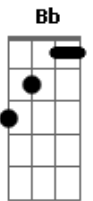
© ukulele-chords.com



© ukulele-chords.com



© ukulele-chords.com



© ukulele-chords.com