

Beseech - Devil's Plaything

tom:

Cm
Love is a flame Cm Ab
A devil's thing Bb Cm
A violent storm Cm Ab
About to be born Bb Cm

Cm Ab
Just look in these eyes Bb Cm
See all the lies Cm Ab
All the things you see Bb Cm
You cannot deny

(Cm Ab Bb Cm)
(Cm Ab Bb Cm)
(Cm Ab Bb Cm)
(Cm Ab Bb Cm)

Cm Ab
And this flame Bb Cm
That burns inside Cm Ab
If you get too close Bb Cm
Burn you alive Cm Ab
Just look in these eyes Bb Cm
And see if they lie Cm Ab
All these words I speak Bb Cm
You cannot deny

(Cm Ab Bb)

Cm Ab
Got a light Bb Cm
Shines on me Cm Ab
Gentle light Bb Cm
It will never be

Cm Ab
See the flame Bb Cm
In my hand Cm Ab
If you're playing with fire Bb Cm
You're playing in Hell

(Cm Ab Bb Cm)
(Cm Ab Bb Cm)
(Cm Ab Bb Cm)
(Cm Ab Bb Cm)

Cm Ab
Devil's plaything Bb Cm
In my hands Cm Ab
If you don't want pain Bb Cm
You don't understand Cm Ab

Got a light Bb Cm
Shines on me Cm Ab
If you wanna touch flames Bb Cm
Come unto me

(Cm Ab Bb Cm)
(Cm Ab Bb Cm)
(Cm Ab Bb Cm)
(Cm Ab Bb Cm)

Cm Ab
Got a flame Bb Cm
Burns inside Cm Ab
If you don't wanna burn Bb Cm
Just walk on by Cm Ab
And the pain Bb Cm
You're feeling now Cm Ab
Is nothing compared Bb Cm
To the pleasures I hide

Cm Ab
Devil's plaything Bb Cm
In my hands Cm Ab
If you don't want pain Bb Cm
You don't understand

Cm Ab
Got a light Bb Cm
Shines on me Cm Ab
If you wanna touch flames Bb Cm
Come unto me Cm Ab
Got a flame Bb Cm
In my hand Cm Ab
If you don't want a fire Bb Cm
Step out of my light Cm Ab
Walk on by Bb Cm
Just look away Cm Ab
'Cause if you're on my path Bb Cm
You're better off dead

Cm Ab
Devil's plaything Bb Cm
In my hands Cm Ab
If you don't want pain Bb Cm
You don't understand Cm Ab Bb Cm
Oh Oh Oh Oh

Cm Ab
Got a light Bb Cm
Shines on me Cm Ab

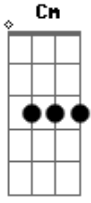
If you wanna touch flames

Bb Ab

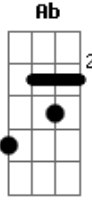
Then Come unto me

Acordes

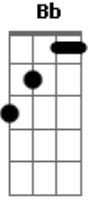
[Final] Cm Ab Bb
Cm Ab Bb Cm



© ukulele-chords.com



© ukulele-chords.com



© ukulele-chords.com