

# Backstreet Boys - Permanent Stain

Tom: B  
Intro: B

**B**  
Out in the rain looking for sunshine  
**E**  
I call your name, but you're like a ghost  
**Abm** **Gb**  
I let you disappear, should've never let you go  
**B**  
I want to say just for the record  
**E**  
That you still got my heart and my soul  
**Abm**  
And though we're worlds apart  
**Gb**  
Yeah I gotta let you know

**E** **Gb** **Abm** **B**  
You are the piece I can't replace, oh oh oh  
**E** **Gb** **Abm** **Gb**  
You left a mark that won't erase, oh oh

**B** **Gb**  
No one else can teach me how to love again

'Cause you left a permanent stain

**Abm**  
On my heart

**Gb**  
And I've been feeling it

**B**  
Never mind what people say

**Gb**  
'Cause they don't understand

**E**  
How you left a permanent stain

**Abm**  
On my heart

**Gb**  
You're never leaving it

**B**  
Some tried to break through the walls that

**E**  
I build up but they don't compare to you

**Abm** **Gb**  
One chance and I swear I never let you go

**E** **Gb** **Abm** **B**  
You are the piece I can't replace, oh oh oh

**E** **Gb** **Abm** **Gb**  
You left a mark that won't erase, oh oh, nooo

**B** **Gb**  
No one else can teach me how to love again

**E**  
'Cause you left a permanent stain

**Abm**  
On my heart  
**Gb**  
And I've been feeling it  
**B**  
Never mind what people say  
**Gb**  
'Cause they don't understand  
**E**  
How you left a permanent stain  
**Abm**  
On my heart  
**Gb**  
You're never leaving it

**B** **Gb**  
Ooh ooh ooh ooh  
**E** **Abm**  
You left a permanent stain on my heart

**Gb**  
You're never leaving it

**B** **E**  
Wash away the tide

**Dbm**  
Never gonna fade

**E** **B**  
No one can touch the flame or tame the fire

**E** **Gb** **Abm** **B**  
You are the piece I can't replace, oh oh oh  
**E** **Gb** **Abm** **Gb** (stop)  
You left a mark that won't erase, oh oh

**B** **Gb**  
No one else can teach me how to love again

**E**  
'Cause you left a permanent stain

**Abm**  
On my heart

**Gb**  
And I've been feeling it

**B**  
Never mind what people say

**Gb**  
'Cause they don't understand

**E**  
How you left a permanent stain

**Abm**  
On my heart

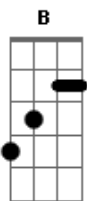
**Gb**  
You're never leaving it

**B** **Gb**  
Ooh ooh ooh ooh

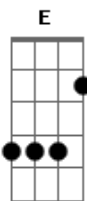
**E** **Abm**  
You left a permanent stain on my heart

**Gb**  
You're never leaving it

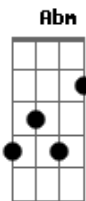
## Acordes



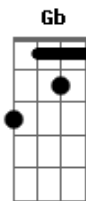
© ukulele-chords.com



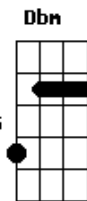
© ukulele-chords.com



© ukulele-chords.com



© ukulele-chords.com



© ukulele-chords.com