

Attalus - Man, o Shipwreck

Tom: D

Intro: Bm Em Gbm

Always ^{Bm} searching ^A never ^G finding, ^{Em} growing ^{Gbm} colder every ^{Bm} mile
 Life a ^G thread that keeps ^{Bm} unwinding on this ^{Gbm} unforgiving ^{Bm} isle
 Man o vessel ^G lost and ^{Bm} stranded, how you've ^A lost ^{Gbm} your ^{Bm} innocence

^{Bm} Look at yourself, understand it, you've been shipwrecked ever since

(Bm Em Gbm)

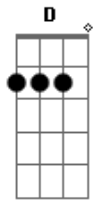
^{Bm} Shadows fall as ^A waters ^G rising, this a ^{Em} cruel ^{Gbm} calamity

^{Bm} Silhouettes on the ^A horizon, ^G shadows of ^{Gbm} humanity

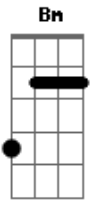
^G Man o ship without a ^{Bm} captain, who will ^{Gbm} clean up the ^{Bm} debris?

^{Bm} Look at yourself ? see what happened, Justice saw your muti -
 ny

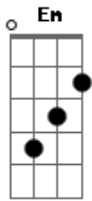
Acordes



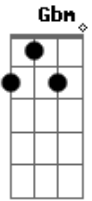
© ukulele-chords.com



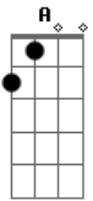
© ukulele-chords.com



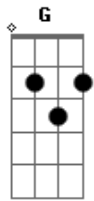
© ukulele-chords.com



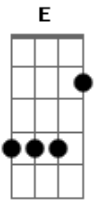
© ukulele-chords.com



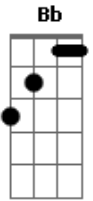
© ukulele-chords.com



© ukulele-chords.com



© ukulele-chords.com



© ukulele-chords.com

Man o vessel ^G lost and ^{Bm} stranded, how you've ^A lost ^{Gbm} your ^{Bm} innocence

^{Bm} Look at yourself, understand it, you've been shipwrecked ever since

(Bm)

^A But ^D shattered ^{Bm} sails still have their ^G glory, beautiful though ^A broken art

^{Bm} Scattered on the ^{Bm} rocks a ^D story, fragments of an ^E Author's heart

^{Bm} Man o shipwreck on the ^{Bm} high seas look at yourself ? see what I see

^G All the things you could have been

^{Bm} Man o shipwreck on the ^{Bm} high seas look at yourself ? see what I see

^G All the things, all the things you could be again

[Final] ^D ^{Bm} ^G ^A