

Alice In Chains - I Can't Have You Blues

Tom: **A** (verse)

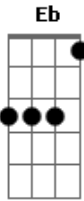
finalização: **Eb Ab Db Gb Bb Eb**
(intro) (verso)

(solo)

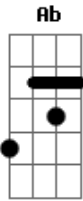
Acordes



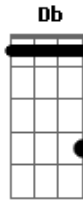
© ukulele-chords.com



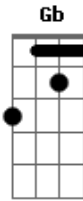
© ukulele-chords.com



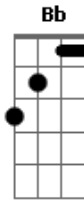
© ukulele-chords.com



© ukulele-chords.com



© ukulele-chords.com



© ukulele-chords.com