

# Alessia Cara - Stone

Tom: F

F Dm  
So much on my mind  
C F  
I think I think too much  
F Dm  
Read between these lines  
C Bb  
Unspoken weight of words  
Bb C F  
But time comes to rest when you are by my side, it blurs

F C Bb  
And I will follow where this takes me  
C C F Am7  
And my tomorrows long to be unknown  
Dm C Bb  
When all is shaken, be my safety  
C F  
In a world uncertain, say you'll be my stone

F Dm  
Change in every wind  
C F  
The sands of time don't know our name  
F Dm  
Oh nothing's sure, but surely as we stand  
C Bb  
I promise I will stay the same  
Bb C  
And I've never seen forever  
C F  
But I know we'll remain

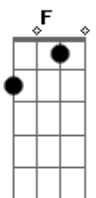
F C Bb

And I will follow where this takes me  
C C F Am7  
And my tomorrows long to be unknown  
Dm C Bb  
When all is shaken, be my safety  
C F  
In a world uncertain, say you'll be my stone  
F  
(Ooooooh ooh ooh)  
Dm  
Be my stone  
C F Am7  
In a world uncertain, say you'll be my stone

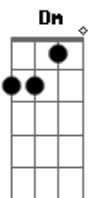
Dm Bb C  
Oh steady me, be my source of gravity  
C G2  
While my world's unraveling  
G2 Bb C F  
Say you'll never change, oooooohhh Oh

F C Bb  
And I will follow where this takes me  
C C F Am7  
And my tomorrows long to be unknown  
Dm C Bb  
When all is shaken, be my safety  
C F  
In a world uncertain, say you'll be my stone  
F  
(Ooooooh ooh ooh)  
Dm  
Be my stone  
C F  
In a world uncertain, say you'll be my stone

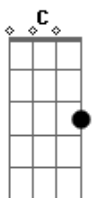
## Acordes



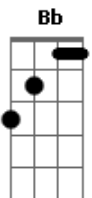
© ukulele-chords.com



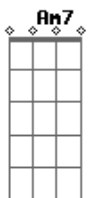
© ukulele-chords.com



© ukulele-chords.com



© ukulele-chords.com



© ukulele-chords.com