

A-Ha - Blue Sky

Tom: C

^F
Blue sky (Blue sky)
^F ^{Am}
Blue sky (Blue sky)
^F ^{Am}
Blue sky (Blue sky)
^F ^{Am}
Blue sky

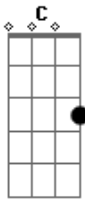
^F ^{Am}
I find it hard to breathe as life just eats away
^F ^{Am}
At the faces that surround me they look tired today
^{Dm} ^{Bb}
The lady at my table doesn't want me here
^{Am} ^D
I just want to talk to her
^F ^{Em}
But will she laugh at my accent and make fun of me
^F ^{Em F Em F}
Oh doesn't seem like this blue sky's here for me
^F ^{Am}
There are no girls in here as far as I can see
^F ^{Am}
Only pinned up posters looking down at me
^{Dm} ^{Bb}
Watching paper cups of coffee going cold before my eyes

^{Am} ^D
All the things I see that make me realise
^F ^{Em}
I'm in this big world without you, nothing to my name
^F
Oh I never feel like blue sky meant to stay.

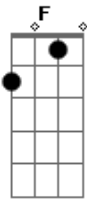
^F ^{Am}
Blue sky (Blue sky)
^F ^{Am}
Blue sky (Blue sky)
^F ^{Am}
Blue sky (Blue sky)
^F ^{Am G}
Blue sky

^F ^{Am}
I'm dying to be different in the coffee shop
^F ^{Am}
I live to borrow strength, now my supplies are cut
^{Dm} ^{Bb}
Oh I'm older than my looks and younger than my years
^{Am} ^D
I'm too young to take on my deepest fears
^F ^{Em}
Oh I used to be confused but now I just dont know
^F ^{Am}
Since you left I've been watching blue skies come and go
^F ^C
Since you left I've been watching blue skies come and go

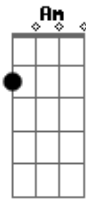
Acordes



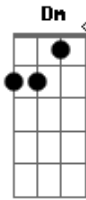
© ukulele-chords.com



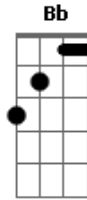
© ukulele-chords.com



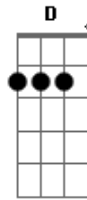
© ukulele-chords.com



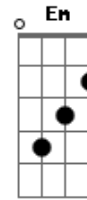
© ukulele-chords.com



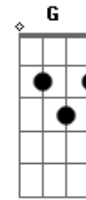
© ukulele-chords.com



© ukulele-chords.com



© ukulele-chords.com



© ukulele-chords.com